



www.tungnam.com.hk

(852) 2783 0881

(852) 5685-8777

Bangkok Luxury Hotel Collections The Ritz-Carlton, Bangkok Bonus Night Offer

曼谷最新豪華酒店推介

出發及入住日期 Travel & Stay Period: 25 Jul – 31 Dec 2025

❗ 出票日期,旺季,轉乘其他 Booking class 附加費等請向本公司職員查詢



✧ 套票內容 Package Details ✧

- ✧ 來回香港至曼谷國泰航空經濟或商務客位機票乙張
Round trip Economy Class or Business Class air ticket between Hong Kong and Bangkok by Cathay Pacific
- ✧ 2-4 晚酒店住宿連早餐 2-4 nights hotel accommodation with breakfast
- ✧ 0.15%旅監局印花徵費 0.15% TIA Levy

🌟 Newly Opened in Nov 2024!

Discover an Urban Retreat in the Heart of Bangkok

<https://www.ritzcarlton.com/en/hotels/bkkrb-the-ritz-carlton-bangkok/overview/>

The Ritz-Carlton, Bangkok, the city's newest luxury hotel, is your doorway to the city. Located on Wireless Road and elevated within One Bangkok. Hotel offers unparalleled views of Lumpini Park, immaculately designed rooms and suites, four dining options, The Ritz-Carlton Spa, outdoor swimming pools, etc. discover a sanctuary of beauty, culture, and legendary hospitality.

One Bangkok, A new landmark in Bangkok, opened in October 2024, is located next to Lumpini Park and Benjakitti Park. This multipurpose development seamlessly combines business, leisure, culture, recreation, shopping, and dining, providing an unparalleled lifestyle experience.



專享禮遇 Extra Benefit

包來回曼谷機場至酒店接送

Include **roundtrip** transfer between Airport and Hotel

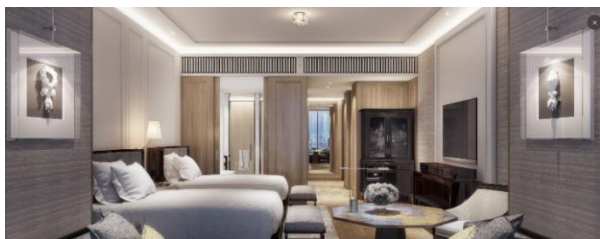


更多聯絡方法: (852) 5685-8777

TNT27830881

TNT27830881

Tel: (852) 2783 0881 (18lines) | Fax: (852) 2388 0003 | Web Site: www.tungnam.com.hk | Email: tntours@tungnam.com.hk




Deluxe Room

A 50 sqm guest room well-equipped with separate bathtub and shower, complemented by luxurious Diptyque bath products, Frette linens, Dyson hairdryers, etc.



Gardenia Suite

Overlooking Lumpini Park with your private balcony, the 102 sqm Gardenia Suite allows you to spend a relaxing evening with Ritz-Carlton. Offering 24/7 access to The Ritz-Carlton Club Lounge which includes complimentary Afternoon tea, Hors d'oeuvres, dessert and non-alcoholic beverages.

	Sharing Twin (per person)		
No. of Nights	2 Nights	3 Nights	4 Nights
Deluxe Room (with Economy Class air ticket)	From \$5,850		From \$6,350
Gardenia Suite (with Business Class air ticket)	From \$15,750		From \$16,790
<div>Exclusive Privilege </div> <div><div><div>✓</div><div>Daily Breakfast for two persons</div></div><div><div>✓</div><div>100 USD Hotel credits per stay</div></div><div><div>✓</div><div>Early check in and late check out (Subject to availability)</div></div><div><div>✓</div><div>Upgrade of room type (Subject to availability)</div></div></div> <div><div>2+1 Bonus Night Offer</div><div>Book a 2-night stay and receive a complimentary 3rd night!</div></div> <div><div>*Blackout dates apply.</div></div>			

細則及條款 Terms & Conditions:

- 套票價錢以每位計算，如有更改，恕不另行通知。Prices quoted are on per adult basis and subject to change without prior notice.
- 只適用於新預訂之客人 Valid for new bookings only, subject to availability.
- 以上酒店房種資料及圖片只供參考。The above hotel room types and photos are for reference only.
- 可根據要求提供單人房、三人房或小童價錢，請聯繫我們查詢。Single, Triple or Child prices are available on request basis. Please contact us for details.
- SHARE TWIN: 2 張床房/SINGLE ROOM: 單人房/SEMI DOUBLE: 房間面積較 TWIN/DOUBLE 細小或相等於 SINGLE/TWIN+EXTRA BED: 2 張床房加床。而加床並非正式固定床，尺寸會較小及有機會是梳化床/拉床/摺床。SHARE TWIN: 2 single bed/SINGLE ROOM: one single bed /SEMI DOUBLE: Room size is smaller than TWIN/DOUBLE ROOM or same as SINGLE ROOM/TWIN+EXTRA BED: 2 Single Bed with Extra bed. Extra bed is not a formal fixed bed, the size will be smaller and it will be sofa bed/broach bed/folding bed.
- 如果您希望在同一家酒店逗留更長時間，我們可以安排住宿延期請聯繫我們查詢。We can arrange to accommodation extension if you wish to stay longer in the same hotels. Please contact us for prices and details.
- 需另加收旺季附加費。Subject to high peak season surcharge.
- 必須在出發前至少 7 個工作日進行預訂。Reservations must be made at least 7 working days prior to departure.
- 預訂確認後，恕不更改，取消和退款。No amendment, cancellation and refund once booking is confirmed.
- 有關預訂條款和條件，請瀏覽：<https://bit.ly/3WNJPam>
- 以上價錢不包括離境稅、香港機場保安費、航空保險附加費、航空燃油附加費、季節性附加費和旅行社服務費。Departure taxes, Hong Kong Airport Security Charge, airlines insurance surcharge, airlines fuel surcharge, seasonal surcharge and travel agency service fee are not included in the above fares.
- 這些金額將在確認訂單後確定，並將添加到最終票價中。These amounts will be determined upon your confirmation of booking and will be added to the final fare.
- 此優惠不能與其他任何促銷、優惠券或折扣一起使用。The offer cannot be used in conjunction with any other promotions, offers, vouchers or discounts.
- 如有任何爭議，本公司保留最終決定權。The Travel Agency reserves final decision in case of any disputes.

Last Update: 18 Jul 2025